

Series: COMPACT-FAN Type CEK
 with external motor
 single inlet
 with forward curved blades

FISCHBACH

Luft- und Ventilatorentechnik GmbH

Type: CEK570/E25

ERP KONFORM

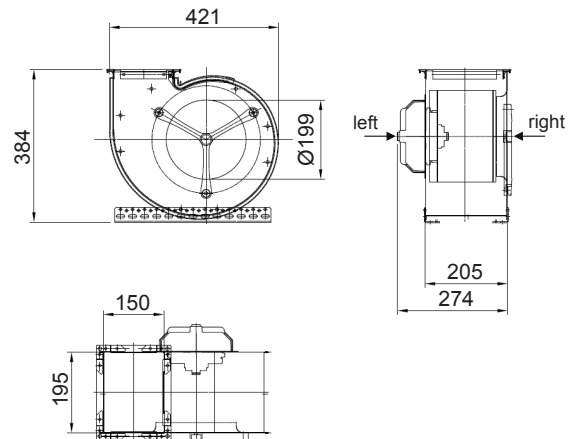
CE -conform



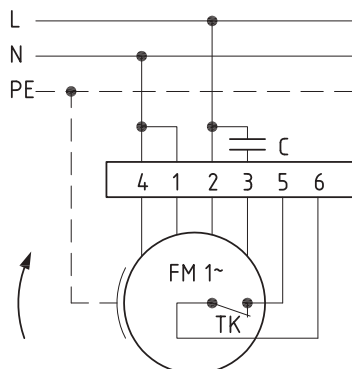
manufacturer:
 Fischbach Luft- und Ventilatorentechnik GmbH
 Am Hellerberg 22-24
 D-57290 Neunkirchen
 phone: ++49(0)2735/777-0
 telefax: ++49(0)2735/770-625
 internet: www.fischbach-luft.de
 email: info@fischbach-luft.de

Technical Data

weight:	(kg)	18,5
material housing:	steel, galvanized	
material impeller:	steel, galvanized	
direction of rotation:	left/right	
protection class:	IP 65	
insulation class:	F	
motor protection:	thermal contact	

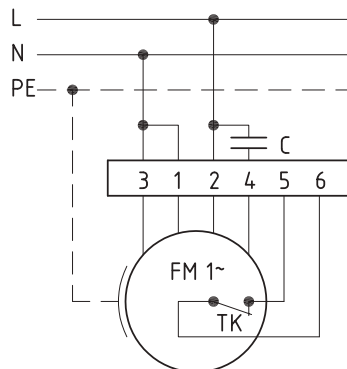


connection plan
0.11-1 r.



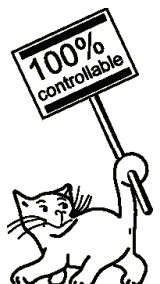
rotating right

connection plan
0.11-1 l.



rotating left

the silent one



Series: COMPACT-FAN Type CEK
with external motor
single inlet
with forward curved blades

FISCHBACH

Luft- und Ventilatorentechnik GmbH

Type: CEK570/E25

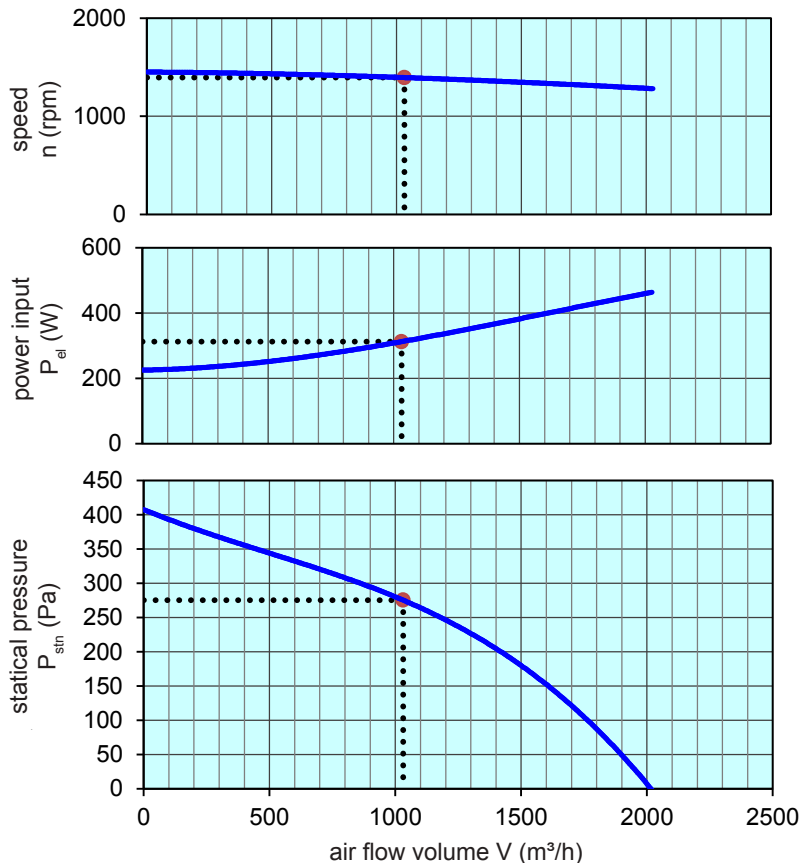
Erp 2015 2016 x 2018

Performance data

main voltage:	(V)	230 (1~)
frequency:	(Hz)	50
current max.:	(A)	2,4
power input max.:	(kW)	0,46
air flow volume max.:	(m³/h)	2030
statical pressure max.:	(Pa)	406
speed max.:	(rpm)	1450
max. air flow temperature	(°C)	80
max. ambient temperature	(°C)	40
capacitor:	(µF)	12

ErP-Data:

total efficiency fan (η_e):	(%)	27,6
installation category:		A
efficiency category:		static
efficiency grade: N	(%)	35
target efficiency (η_{target}):	(%)	27,5
speed controller		no
year of manufacturing		since 2015
manufacturer:	Fischbach Luft- und Ventilatorentechnik GmbH D-57290 Neunkirchen / HRB 5804 Siegen	
order no. (left/right)		18024020/18024320
power input:	(kW)	0,3
air flow volume:	(m³/h)	1055
statical pressure:	(Pa)	282
speed:	(rpm)	1395
specific ratio:		1
disassembling/recycling/disposal: see page decommission		
installation/operation/maintenance: see operating and mounting instructions		
measurement for determination of efficiency without additional items		



Speed controller / accessories / sound data, please see in the appropriate table

Technical documentation according to page: **General information**